



Indian
MOTORCYCLE COMPANY

**F500K
8 AND 10 HP
ENGINE
ASSEMBLY**

**FACTORY
PARTS
LIST**

PART No 80602015

--- NOTICE ---

This manual is based on units in production at the time of publication shown below. However, the Company reserves the right to make changes to models, procedures, and specifications at any time without prior notice.

Please study the terms and definitions below in order to properly use the information given within the parts tables.

DIMENSIONS: Unless stated otherwise, all dimensions are in millimeters. Dimensions are given in the following manner.

- TUBING – Inside diameter X Length
- O-RINGS – Cross section X Inside diameter
- WASHERS, SHIMS, COLLARS – Inside diameter X Outside diameter X Thickness (length)
- PINS – Outside diameter X Length
- NUTS – Thread size X Pitch X Size
- BOLTS, STUDS – Thread size X Pitch X Overall length

SYMBOLS: Various space-saving symbols are used to aid descriptions.

- ℓ or L = Length
- s = "set of"
- F# = Frame Number
- t = Thickness
- T = Number of "Teeth"
- V = Rated Voltage
- O.D. or I.D. = "Outside" or "Inside" Diameter
- A.R. = "As Required"
- W = Rated Wattage

ASSEMBLIES: Certain assemblies are orderable. Component parts of those assemblies are preceded by a dot(.) in the following manner:

- CLUTCH ASSY
- . HOUSING, Clutch
- . SPRING, Clutch
- . CAP, Spring (etc)
- 12MM PISTON PIN
- HOLE = 8 HP
- 13MM PISTON PIN
- HOLE = 10 HP

10 HP SPECIALIZED PARTS

THE INDIAN MOTORCYCLE COMPANY
 F500K 8 HP AND 10 HP ENGINE ASSEMBLY
 PARTS LIST
 1st EDITION, SEPTEMBER, 1974
 PART NUMBER 8060 2015

All rights reserved by The Indian Motorcycle Company, Beverly Hills, California. No part of this work may be reproduced or copied in any form or by any means – graphic, electronic, or mechanical, including photocopying, recording, taping, or information and retrieval systems – without written permission of the publisher.

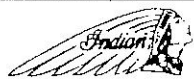
©1974 by The Indian Motorcycle Co.
Beverly Hills, Calif.

No liability can be accepted for any inaccuracies or omissions within this publication. All procedures and specifications subject to change without notice.

F500K 8 HP AND 10 HP ENGINE PARTS LIST

TABLE OF CONTENTS

FIGURE	DESCRIPTION	PAGE
1	CRANKCASE COVERS - CYLINDER	2
2	CRANKSHAFT - CRANKCASES - CLUTCH	6
3	TRANSMISSION - KICK STARTER	10
4	ELECTRICAL	12
5	AIR FILTER	12
6	CARBURETOR	14
7	OIL PUMP	16

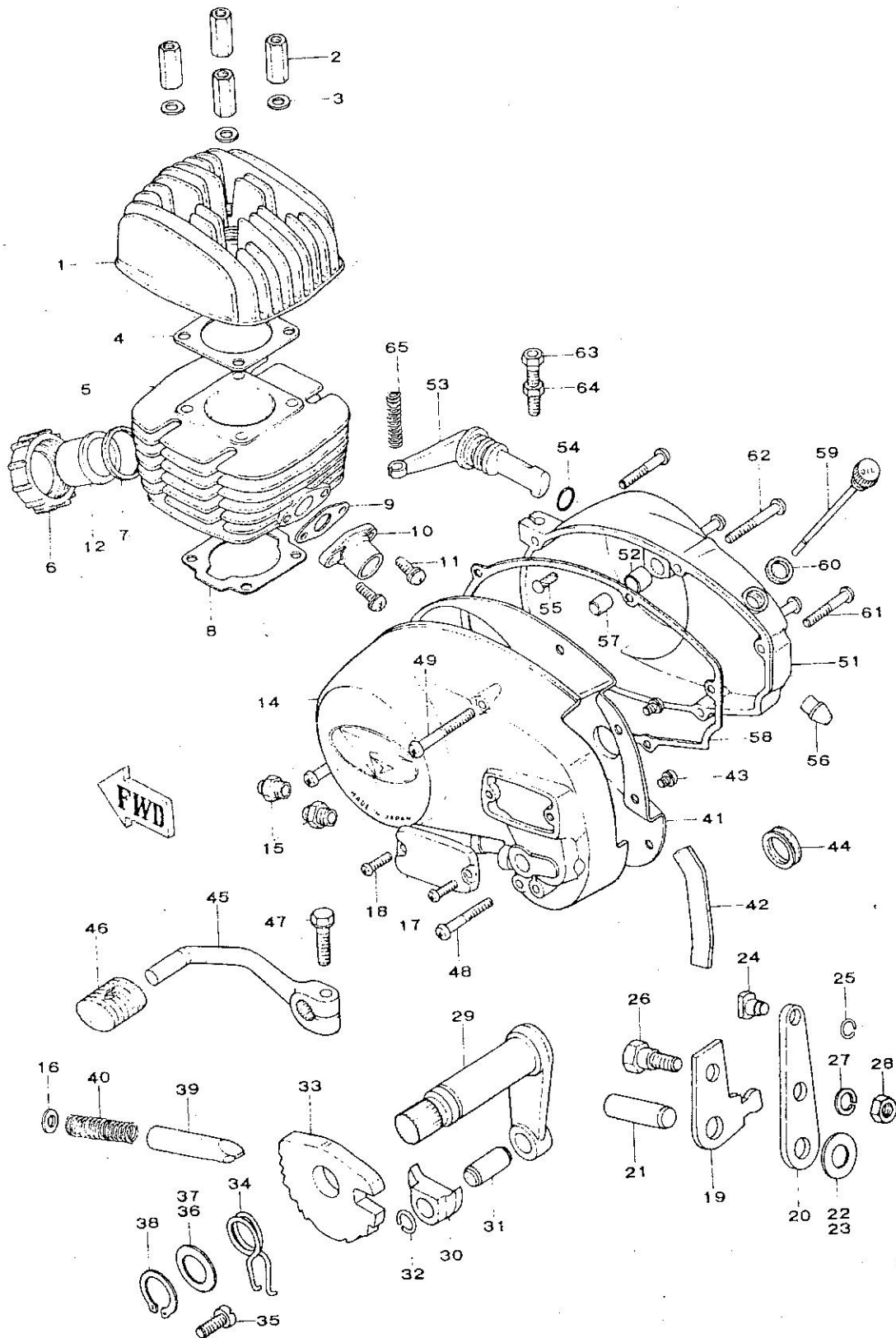


REF. NO.	PART NUMBER	QTY	DESCRIPTION	REMARKS
1 - 1	9200 1001	1	HEAD, Cylinder	
1 - 2	9200 1002	4	NUT, Cylinder Head	
1 - 3	9200 1003	4	WASHER, Cylinder Nut	
1 - 4	9200 1004	1	GASKET, Cylinder Head	
1 - 5	9200 1005	1	CYLINDER, 8HP	
1 - 5-1	9200 1250	1	CYLINDER, 10HP	
1 - 6	9200 1006	1	NUT, Exhaust	
1 - 7	9200 1007	1	GASKET, Exhaust	
1 - 8	9200 1008	1	GASKET, Cylinder Base	
1 - 9	9200 1009	1	GASKET, Intake, 8HP	
1 - 9-1	9200 1251	1	GASKET, Intake, 10HP	
1 - 10	9200 1010	1	MANIFOLD, Intake, 8HP <i>2537-15/10 Pin + 1/2" x 20</i>	Without Oil Injection
1 - 10-1	9200 1230	1	MANIFOLD, Intake, 8HP <i>2537-15/10</i>	With Oil Injection
1 - 10-2	9200 1252	1	MANIFOLD, Intake, 10HP <i>2546-15/10</i>	Without Oil Injection
1 - 10-3	9200 1253	1	MANIFOLD, Intake, 10HP	With Oil Injection
1 - 11	9200 1011	2	SCREW	
1 - 12	9200 1012	1	JOINT, Exhaust	
1 - 13	9200 1013	1	MAGNETO COVER ASSY (Not Shown)	Includes Items 14~43
1 - 14	9200 1014	1	COVER, Magneto	
1 - 15	9200 1015	2	NIPPLE, Grease	
1 - 16	9200 1016	1	WASHER	
1 - 17	9200 1017	1	COVER, Shifter	
1 - 18	9200 1018	2	SCREW	
1 - 19	9200 1019	1	GUIDE, Shifter	
1 - 20	9200 1020	1	ARM, Shifter	
1 - 21	9200 1021	1	PIN, Shifter	
1 - 22	9200 1022	A.R. {	SHIM, t=0.2	
1 - 23	9200 1023		SHIM, t=0.3	
1 - 24	9200 1024	1	PIN, Slide	
1 - 25	9200 1025	1	SNAP RING	
1 - 26	9200 1026	1	BOLT	
1 - 27	9200 1027	1	WASHER	
1 - 28	9200 1028	1	NUT	
1 - 29	9200 1029	1	SHAFT, Change	
1 - 30	9200 1030	1	KEY, Change	
1 - 31	9200 1031	1	PIN, Change Key	
1 - 32	9200 1032	1	SNAP RING	
1 - 33	9200 1033	1	RACHET, Change	
1 - 34	9200 1034	1	SPRING, Change Ratchet	
1 - 35	9200 1035	1	CENTER SCREW	
1 - 36	9200 1036	A.R. {	SHIM, t=0.2	
1 - 37	9200 1037		SHIM, t=0.3	
1 - 38	9200 1038	1	SNAP RING	
1 - 39	9200 1039	1	PLUNGER, Ratchet	
1 - 40	9200 1040	1	SPRING, Plunger	
1 - 41	9200 1041	1	COVER, Inside	
1 - 42	9200 1042	1	PACKING, Inside Cover	
1 - 43	9200 1043	2	SCREW	
1 - 44	9200 1044	1	SEAL, Dust	
1 - 45	9200 1045	1	LEVER, Change	

GE

4

FIGURE 1 CRANKCASE COVERS - CYLINDER

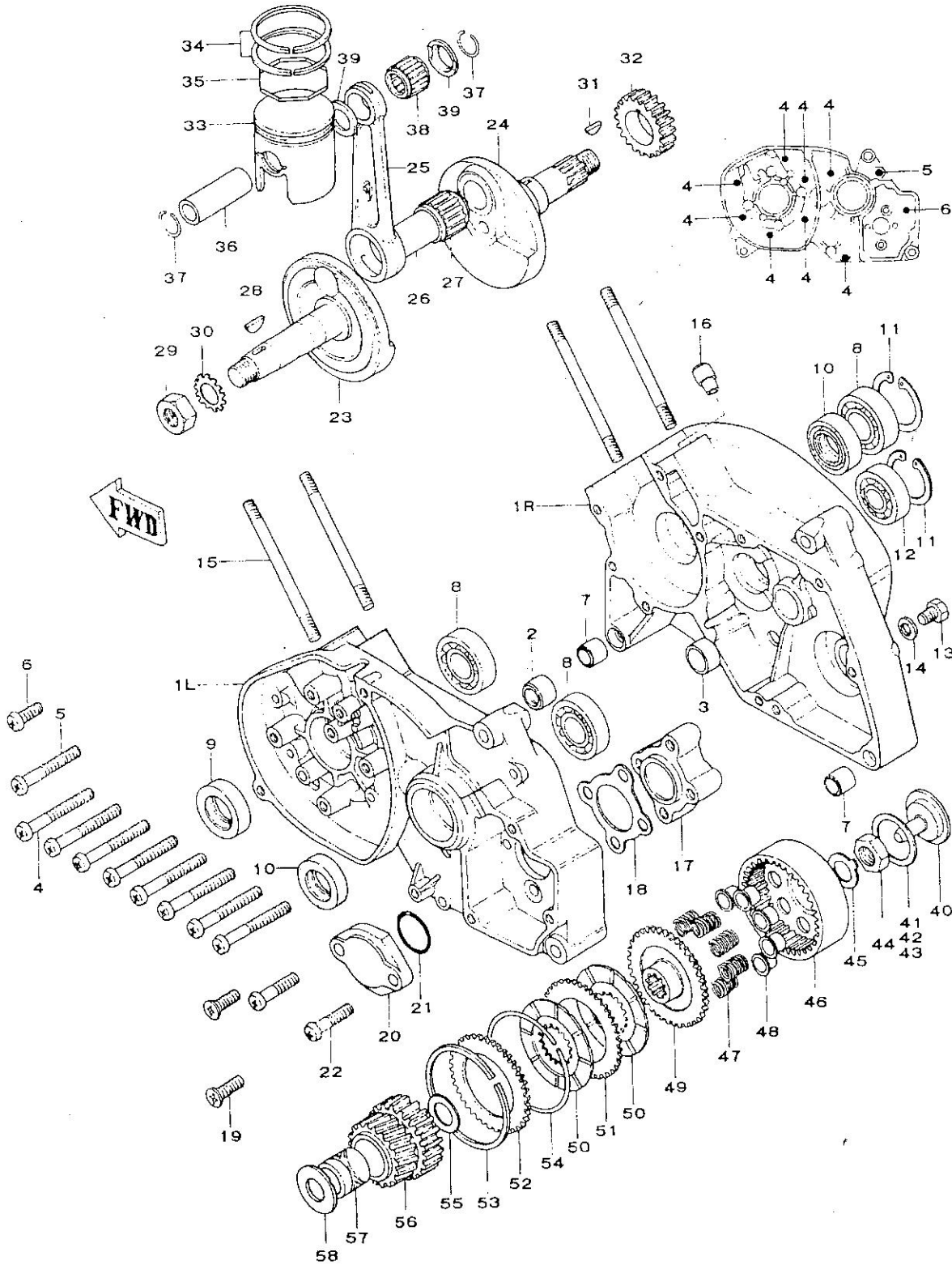




REF. NO.	PART NUMBER	QTY	DESCRIPTION	REMARKS
1 -46	9200 1275	1	RUBBER, Change Lever	
1 -47	9200 1047	2	BOLT	
1 -48	9200 1048	2	SCREW	
1 -49	9200 1049	1	SCREW	
1 -50	9200 1050	1	CLUTCH COVER ASSY (Not Shown)	Includes Items 51~56
1 -51	9200 1051	1	. COVER, Clutch	
1 -52	9200 1052	1	. BUSHING, Pressure Pin	
1 -53	9200 1053	1	. LEVER, Clutch Actuating	
1 -54	9200 1054	1	. O-RING, Actuating Lever	
1 -55	9200 1055	1	. RIVET, Actuating Lever	
1 -56	9200 1056	1	. STOP, Kick Lever	
1 -57	9200 1057	1	PIN, Clutch Pressure	
1 -58	9200 1058	1	GASKET, Clutch Cover	
1 -59	9200 1059	1	GAUGE, Oil	
1 -60	9200 1060	1	GASKET, Oil Gauge	
1 -61	9200 1061	3	SCREW	
1 -62	9200 1048	2	SCREW	
1 -63	9200 1062	1	ADJUSTER, Clutch Cable	
1 -64	9200 1028	1	NUT	
1 -65	9200 1063	1	SPRING, Cable Adjuster	
1 -66	9200 1064	1s	GASKET SET (Not Shown)	Includes Items 4, 7, 8, 9, and 58

FIGURE 2

CRANKSHAFT - CRANKCASES - CLUTCH

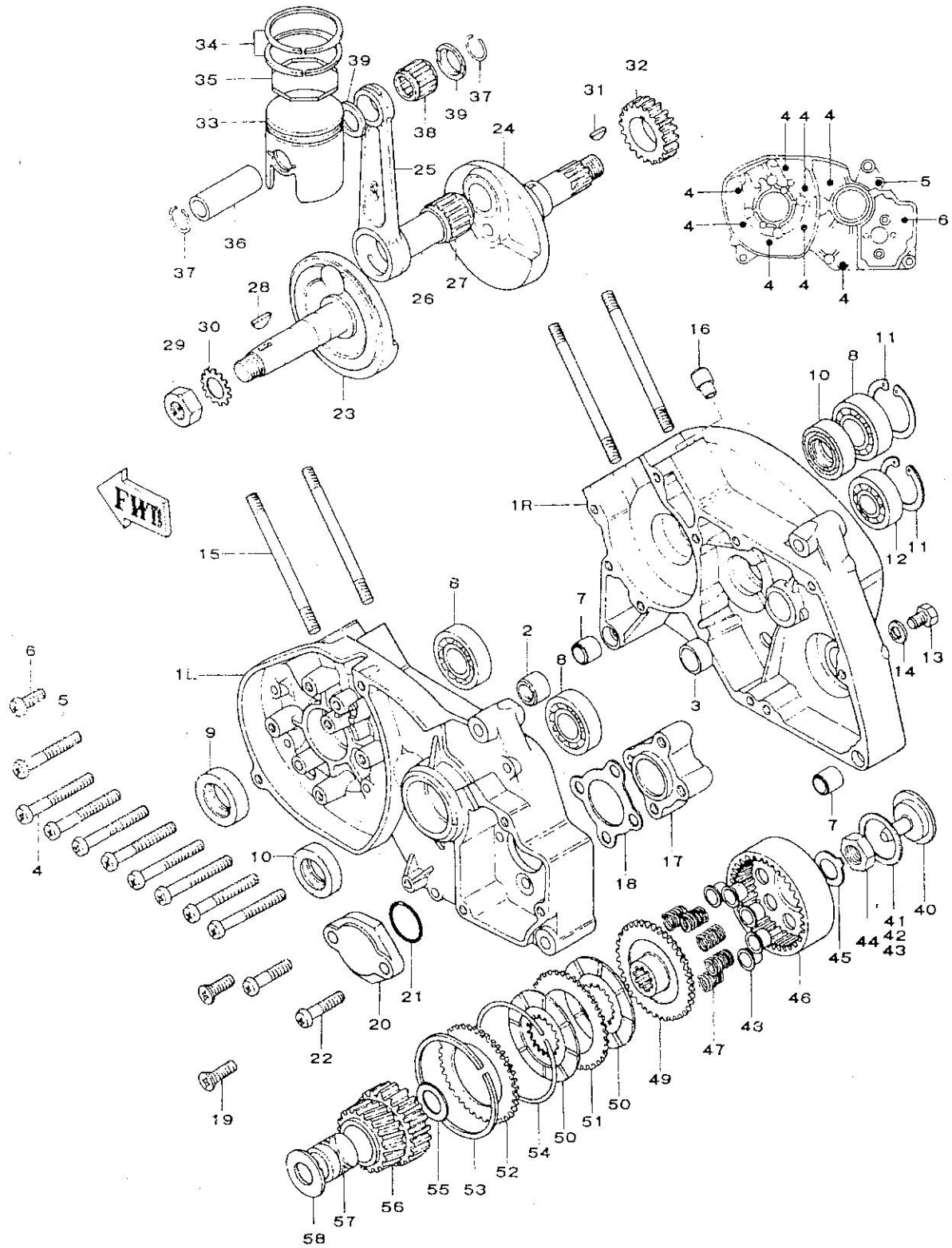




REF. NO.	PART NUMBER	QTY	DESCRIPTION	REMARKS
2 - 1	9200 1065	1s	CRANKCASE SET, L & R	
2 - 2	9200 1066	1	BUSHING, Main Shaft	
2 - 3	9200 1067	1	BUSHING, Counter Shaft	
2 - 4	9200 1068	8	SCREW	
2 - 5	9200 1061	1	SCREW	
2 - 6	9200 1069	1	SCREW	
2 - 7	9200 1070	2	PIN, Dowel	
2 - 8	9200 1071	3	BEARING (#6204)	
2 - 9	9200 1072	1	SEAL, Crankshaft L	
2 - 10	9200 1073	2	SEAL, Crankshaft R & Countershaft	
2 - 11	9200 1074	2	SNAP RING	
2 - 12	9200 1075	1	BEARING (#6005)	
2 - 13	9200 1076	1	BOLT, Drain	
2 - 14	9200 1077	1	GASKET, Drain	
2 - 15	9200 1078	4	STUD, Cylinder	
2 - 16	9200 1079	1	BREATHER, Crankcase	
2 - 17	9200 1080	1	HOUSING, Kick Gear	
2 - 18	9200 1081	1	GASKET, Housing	
2 - 19	9200 1082	2	SCREW	
2 - 20	9200 1083	1	COVER, Housing	
2 - 21	9200 1084	1	O-RING, Housing Cover	
2 - 22	9200 1085	2	SCREW	
	9200 1086	1	CRANKSHAFT ASSY, 8HP (Not Shown)	Includes Items 23~27
	9200 1254	1	CRANKSHAFT ASSY, 10HP (Not Shown)	Includes Items 23~27
2 - 23	9200 1087	1	. CRANK, Left	
2 - 24	9200 1219	1	. CRANK, Right	
2 - 25	9200 1088	1	. ROD, Connecting, 8HP	12mm Pin
2 - 25-1	9200 1255	1	. ROD, Connecting, 10HP	13mm Pin
2 - 26	9200 1089	1	. PIN, Crank	
2 - 27	9200 1090	1	. BEARING, Con Rod Big End	
2 - 28	9200 1091	1	KEY, Woodruff	
2 - 29	9200 1092	1	NUT	
2 - 30	9200 1093	1	WASHER, Serrated	
2 - 31	9200 1094	1	KEY, Woodruff	
2 - 32	9200 1095	1	GEAR, Kick Driven	
2 - 33	9200 1096	1	PISTON, Std., 8HP	12mm Pin
	9200 1097		PISTON, 1st Oversize (+0.010"), 8HP	12mm Pin
	9200 1098		PISTON, 2nd Oversize (+0.020"), 8HP	12mm Pin
	9200 1099		PISTON, 3rd Oversize (+0.030"), 8HP	12mm Pin
	9200 1100		PISTON, 4th Oversize (+0.040"), 8HP	12mm Pin
2 - 33-1	9200 1256	1	PISTON, Std., 10HP	13mm Pin
	9200 1257	1	PISTON, 1st Oversize, 10HP	13mm Pin
	9200 1258	1	PISTON, 2nd Oversize, 10HP	13mm Pin
	9200 1259	1	PISTON, 3rd Oversize, 10HP	13mm Pin
	9200 1260	1	PISTON, 4th Oversize, 10HP	13mm Pin
2 - 34	9200 1101	1s	RING, Piston, Std.	
	9200 1102		RING, Piston, 1st O.S. (+0.010")	
	9200 1103		RING, Piston, 2nd O.S. (+0.020")	
	9200 1104		RING, Piston, 3rd O.S. (+0.030")	
	9200 1105		RING, Piston, 4th O.S. (+0.040")	

FIGURE 2

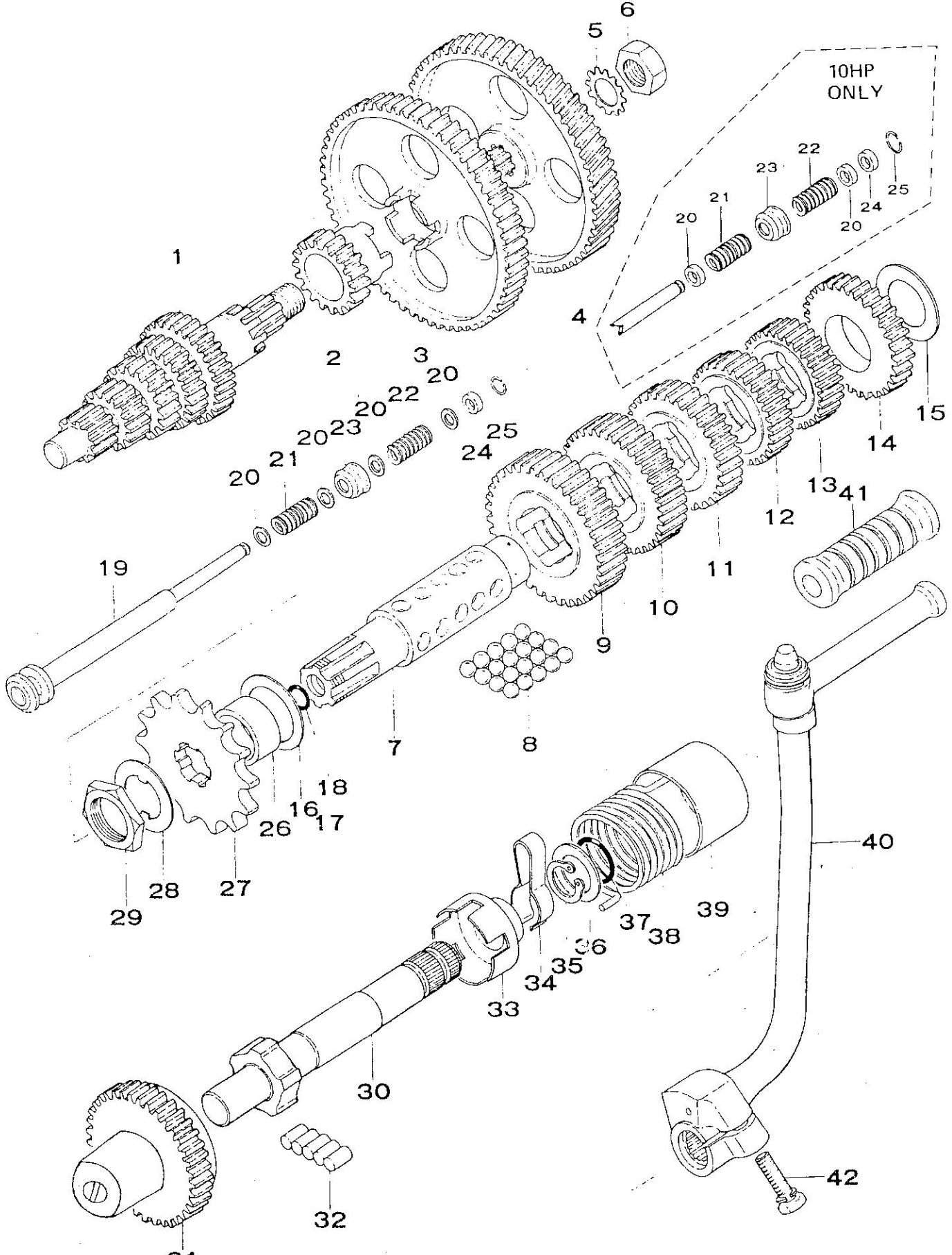
CRANKSHAFT - CRANKCASES - CLUTCH

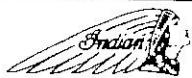




REF. NO.	PART NUMBER	QTY	DESCRIPTION	REMARKS
2 -35	9200 1106	1	EXPANDER, Piston Ring	
2 -36	9200 1107	1	PIN, Piston, 12mm Dia., 8HP	
2 -36-1	9200 1261	1	PIN, Piston, 13mm Dia., 10HP	
2 -37	9200 1108	2	SNAP RING, 12mm, 8HP	
2 -37-1	9200 1262	2	SNAP RING, 13mm, 10HP	
2 -38	9200 1109	1	BEARING, Con Rod Small End, 12mm, 8HP	
2 -38-1	9200 1263	1	BEARING, Con Rod Small End, 13mm, 10HP	
2 -39	9200 1110	2	WASHER, Thrust, 12mm, 8HP	
2 -39-1	9200 1264	2	WASHER, Thrust, 13mm, 10HP	
2 -40	9200 1111	1	BEARING, Clutch Release	
2 -41	9200 1112	A.R. {	SHIM, t=0.2	
2 -42	9200 1113		SHIM, t=0.3	
2 -43	9200 1114		SHIM, t=0.5	
2 -44	9200 1115	1	NUT	
2 -45	9200 1116	1	WASHER	
	9200 1117	1	CLUTCH ASSY, (Not Shown)	Includes Items 46-54
2 -46	9200 1118	1	. HOUSING, Clutch	
2 -47	9200 1119	6	. SPRING, Clutch	
2 -48	9200 1120	6	. CAP, Spring	
2 -49	9200 1121	1	. HUB, Clutch	
2 -50	9200 1122	2	. PLATE, Clutch Friction	Fiber Steel Steel
2 -51	9200 1123	1	. PLATE, Clutch Drive	
2 -52	9200 1124	1	. PLATE, Clutch End	
2 -53	9200 1125	1	. SNAP RING	
2 -54	9200 1126	1	. SNAP RING	
2 -55	9200 1127	1	WASHER, THRUST	
2 -56	9200 1128	1	PRIMARY DRIVE/INNER HUB ASSY	
2 -57	9200 1129	1	BUSHING, Primary Drive Gear	
2 -58	9200 1130	1	WASHER, Thrust	

TRANSMISSION - KICK STARTER





REF. NO.	PART NUMBER	QTY	DESCRIPTION	REMARKS
3 - 1	9200 1131	1	MAIN SHAFT	
3 - 2	9200 1132	1	GEAR, Kick Transfer (19T)	
3 - 3	9200 1133	1	GEAR, Kick Drive (65T)	
3 - 4	9200 1134	1	GEAR, Primary	
3 - 5	9200 1093	1	WASHER, Serrated	
3 - 6	9200 1136	1	NUT	
3 - 7	9200 1137	1	COUNTERSHAFT, 8HP	
3 - 7-1	9200 1265	1	COUNTERSHAFT, 10HP	Do not use w/Ref. No. 20-1, RETAINER, Spring, 10HP Okay to use w/Ref. No. 20, WASHER, 8HP
3 - 8	9200 1138	20	BALL	
3 - 9	9200 1139	1	GEAR, 1st 38T	
3 - 10	9200 1140	1	GEAR, 2nd 36T	
3 - 11	9200 1141	1	GEAR, 3rd 32T	
3 - 12	9200 1142	1	GEAR, 4th 29T	
3 - 13	9200 1143	1	GEAR, 5th 27T	
3 - 14	9200 1144	1	GEAR, Kick Idler (30T)	
3 - 15	9200 1145	1	SPACER, R.	
3 - 16	9200 1146	A.R. {	SHIM, t=0.2	
3 - 17	9200 1147		SHIM, t=0.3	
3 - 18	9200 1148	1	O-RING	
3 - 19	9200 1149	1	SHAFT, Control	
	9200 1135	4	WASHER, 8HP	
	9200 1266	2	RETAINER, Spring, 10HP	Use only W/Ref. No. 7-1, COUNTERSHAFT, 10HP
3 - 21	9200 1150	1	SPRING, L.	
3 - 22	9200 1151	1	SPRING, R.	
3 - 23	9200 1152	1	BALL RECEIVER	
3 - 24	9200 1153	1	STOPPER	
3 - 25	9200 1154	1	SNAP RING	
3 - 26	9200 1155	1	COLLAR	
3 - 27	9200 1156	1	SPROCKET, 14T	
	9200 1157		SPROCKET, 13T	
	9200 1158		SPROCKET, 15T	
3 - 28	9200 1159	1	WASHER, Lock	
3 - 29	9200 1160	1	NUT, Drive Sprocket	
3 - 30	9200 1161	1	SHAFT, Kick	
3 - 31	9200 1162	1	GEAR, Kick	
3 - 32	9200 1163	5	ROLLER	
3 - 33	9200 1164	1	ROLLER, Retainer	
3 - 34	9200 1165	1	CLIP, Kick	
3 - 35	9200 1166	1	SNAP RING	
3 - 36	9200 1167	1	PLATE	
3 - 37	9200 1168	1	O-RING	
3 - 38	9200 1169	1	SPRING, Kick	
3 - 39	9200 1170	1	COVER, Kick Spring	
3 - 40	9200 1171	1	KICK LEVER ASSY	
3 - 41	9200 1172	1	RUBBER, Kick Lever	
3 - 42	9200 1173	1	BOLT	

FIGURE 4 ELECTRICAL

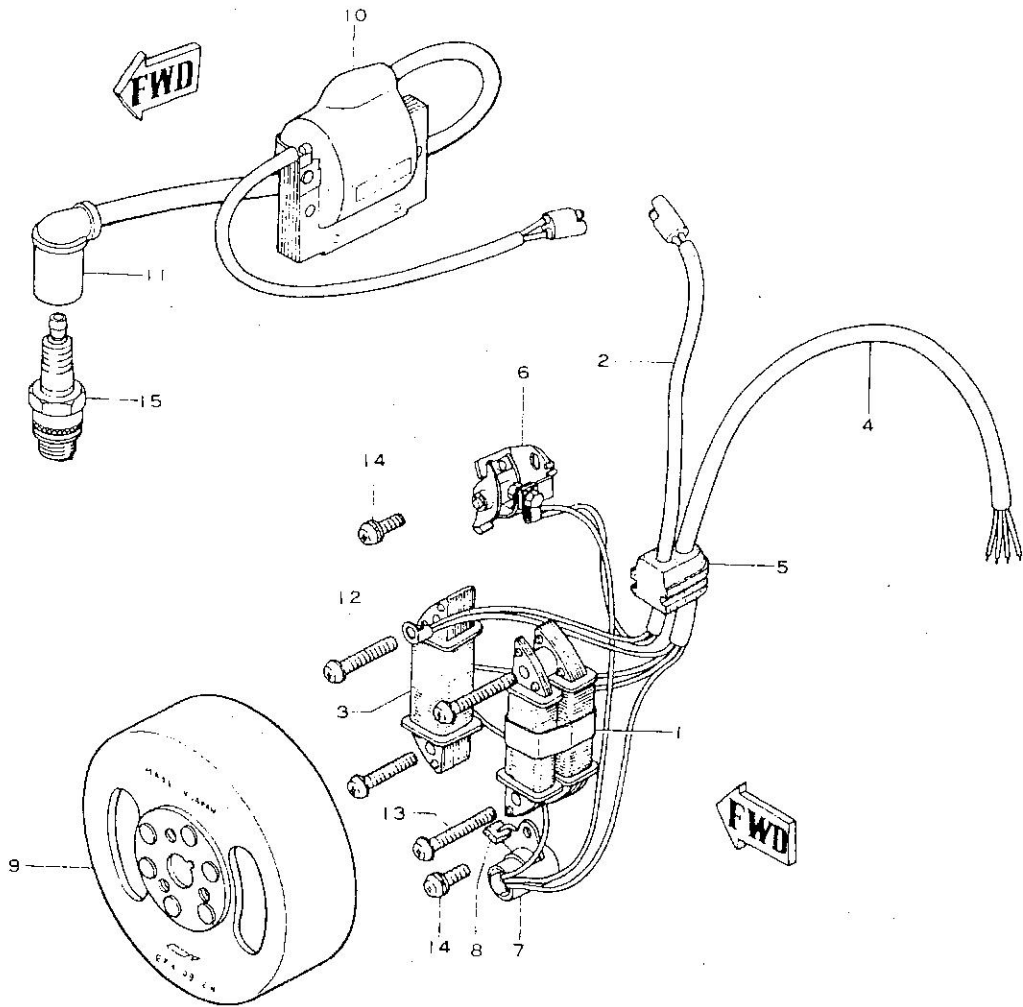
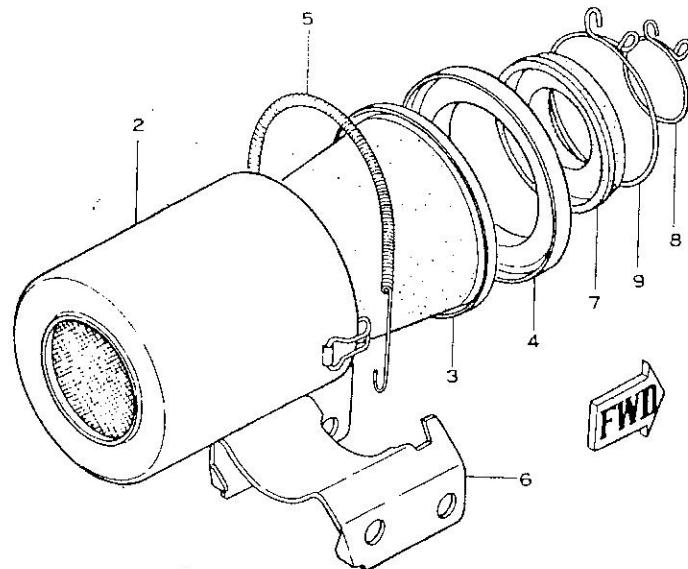


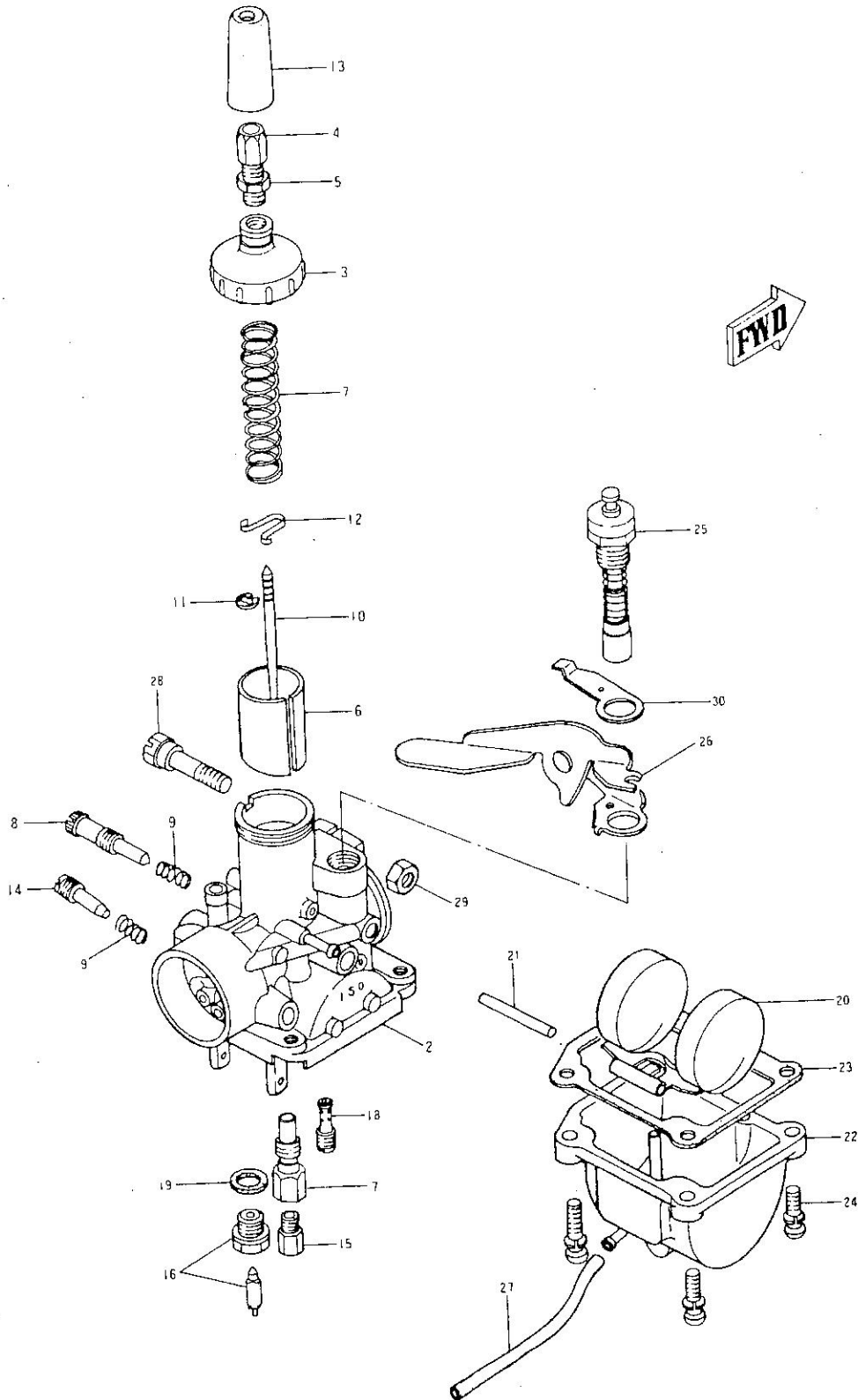
FIGURE 5 AIR FILTER





REF. NO.	PART NUMBER	QTY	DESCRIPTION	REMARKS	
4 - 0	9200 5001	1	MAGNETO ASSY, 8HP (Not Shown)	Includes Items 1~9 Includes Items 1~9	
4 - 0-1	9200 5017	1	MAGNETO ASSY, 10HP (Not Shown)		
4 - 1	9200 5004	1	. COIL, Lighting, 8HP		
4 - 1-1	9200 5018	1	. COIL, Lighting, 10 HP		
4 - 2	9200 5003	1	. WIRE, Ignition Source Coil		
4 - 3	9200 5002	1	. COIL, Ignition Source		
4 - 4	9200 5005	1	. WIRE, Lighting Coil, 8HP		
4 - 4-1	9200 5019	1	. WIRE, Lighting Coil, 10HP		
4 - 5	9200 5006	1	. GROMMET		
4 - 6	9200 5007	1	. BREAKER POINT ASSY		
4 - 7	9200 5008	1	. CONDENSER		
4 - 8	9200 5009	1	. PAD		
4 - 9	9200 5010	1	. MAGNETO FLYWHEEL, 8HP		
4 - 9-1	9200 5020	1	. MAGNETO FLYWHEEL, 10HP		
4 - 10	9200 5011	1	COIL, Ignition		
4 - 11	9200 5012	1	SPARK PLUG CAP ASSY	3/8" Reach	
4 - 12	9200 5013	2	SCREW		
4 - 13	9200 5014	2	SCREW		
4 - 14	9200 5015	2	SCREW		
4 - 15	9200 5016	1	SPARK PLUG, NGK B8S		
FIGURE 5 - AIR FILTER					
5 - 1	9200 1174	1	AIR FILTER ASSY (Not Shown)		Includes Items 2~4
5 - 2	9200 1175	2	. BODY, Air Filter		
5 - 3	9200 1176	1	. ELEMENT, Air Filter		
5 - 4	9200 1177	1	. COVER, Air Filter Body		
5 - 5	9200 1178	1	SPRING, Body Holding		
5 - 6	9200 1179	1	BRACKET, Filter Mounting		
5 - 7	9200 1180	1	JOINT, Filter Inlet		
5 - 8	9200 1181	1	CLIP, Inlet Joint, Small		
5 - 9	9200 1182	1	CLIP, Inlet Joint, Large		

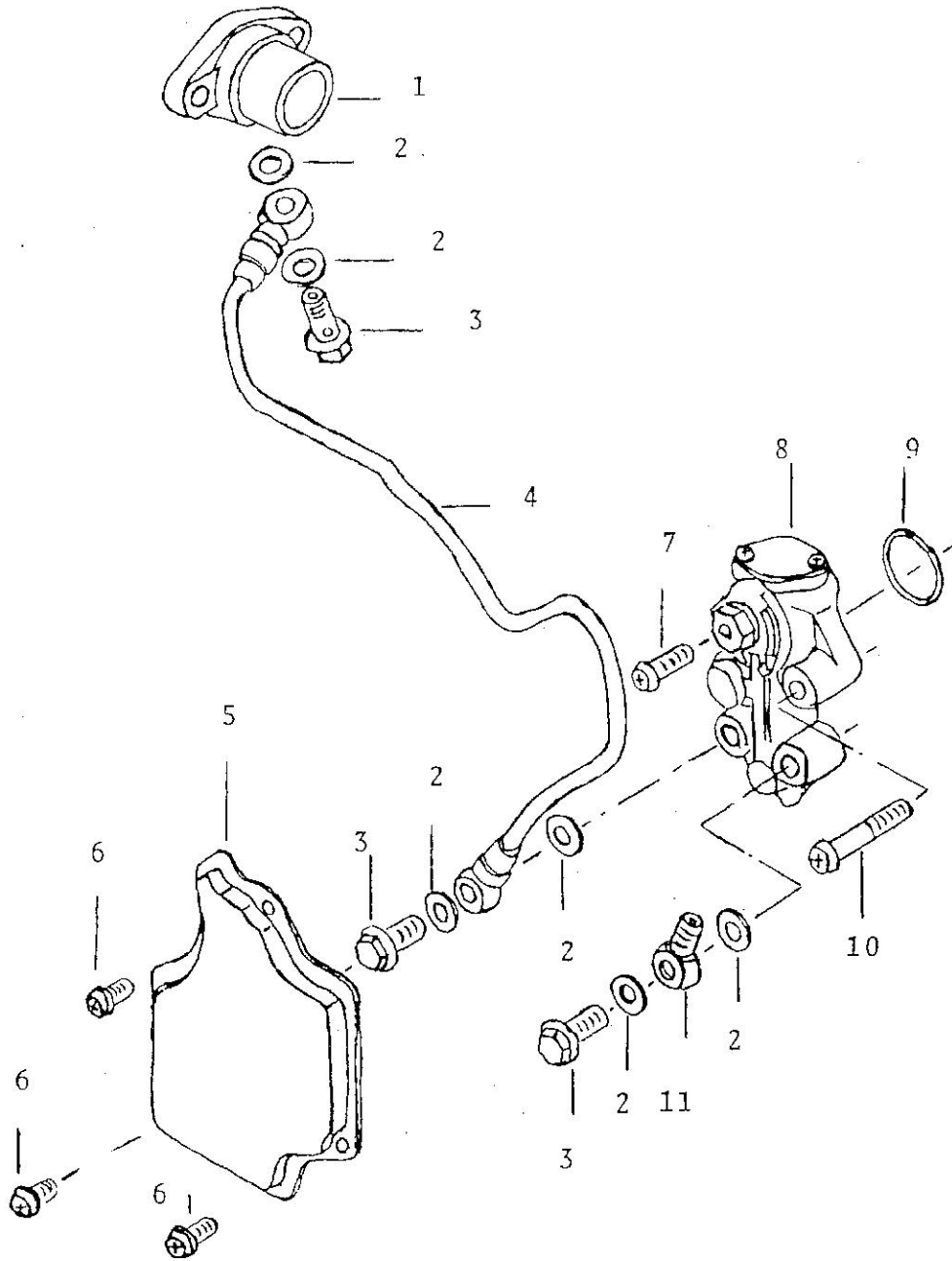
FIGURE 6 CARBURETOR





REF. NO.	PART NUMBER	QTY	DESCRIPTION	REMARKS
6 - 1	9200 1183	1	CARBURETOR ASSY, 20mm, 8HP	Includes Items 2~30
6 - 1-1	9200 1267	1	CARBURETOR ASSY, 22mm, 10HP	Includes Items 2~30
6 - 2	9200 1184	1	. BODY, Mixing Chamber, 20mm, 8HP	
6 - 2-1	9200 1276	1	. BODY, Mixing Chamber, 20mm, 10HP	
6 - 3	9200 1185	1	. CAP, Mixing Chamber	
6 - 4	9200 1186	1	. ADJUSTER, Cable	
6 - 5	9200 1187	1	. NUT, Cable Adjuster	
6 - 6	9200 1188	1	. SLIDE, Throttle, #2.0, 8HP	
6 - 6-1	9200 1277	1	. SLIDE, Throttle, #1.5, 10HP	
6 - 7	9200 1189	1	. SPRING, Throttle	
6 - 8	9200 1190	1	. ADJUSTER, Idle Speed	
6 - 9	9200 1191	1	. SPRING, Idle Speed Adjuster	
6 - 10	9200 1192	1	. NEEDLE, 4DG6, 8HP	
6 - 10-1	9200 1268	1	. NEEDLE, 4D10, 10HP	
6 - 11	9200 1193	1	. CLIP, Needle	
6 - 12	9200 1194	1	. SEAT, Needle Spring	
6 - 13	9200 1195	1	. COVER, Cable Adjuster	
6 - 14	9200 1196	1	. ADJUSTER, Pilot Air	
6 - 15	9200 1197	1	. JET, Main, #90	
	9200 1198		. JET, Main, #80	
	9200 1199		. JET, Main, #70	
	9200 1200		. JET, Main, #60	
	9200 1201		. JET, Main, #100	
	9200 1202		. JET, Main, #110	
	9200 1203		. JET, Main, #120	
	9200 1269		. JET, Main, #130	
6 - 16	9200 1204	1	. INLET VALVE ASSY	
6 - 17	9200 1205	1	. JET, Needle, 0-2, 8HP	
6 - 17-1	9200 1271	1	. JET, Needle, N-6, 10HP	
6 - 18	9200 1206	1	. JET, Pilot, #25	
6 - 19	9200 1207	1	. GASKET, Inlet Valve	
6 - 20	9200 1208	1	. FLOAT ASSY	
6 - 21	9200 1209	1	. PIN, Float Arm	
6 - 22	9200 1210	1	. BODY, Float Chamber	
6 - 23	9200 1211	1	. GASKET, Float Chamber	
6 - 24	9200 1212	4	. SCREW, Float Chamber	
6 - 25	9200 1213	1	. CHOKE PLUNGER ASSY	
6 - 26	9200 1273	1	. LEVER, Choke Plunger	
6 - 27	9200 1215	1	. TUBE, Vent, 3 x 200	
6 - 28	9200 1216	1	. BOLT, Carburetor Securing	
6 - 29	9200 1217	1	. NUT	
6 - 30	9200 1218	1	. DETENT, Plunger Lever	

FIGURE 7 OIL PUMP





REF. NO.	PART NUMBER	QTY	DESCRIPTION	REMARKS
7 - 1	9200 1242	1	OIL PUMP KIT (Not Shown)	Includes Items 2~11
7 - 2	9200 1231	6	. GASKET, Banjo Bolt	
7 - 3	9200 1232	3	. BOLT, Banjo	
7 - 4	9200 1233	1	. LINE, Oil Delivery	
7 - 5	9200 1234	1	. COVER, Oil Pump	
7 - 6	9200 1235	3	. SCREW, Phillips	
7 - 7	9200 1237	1	. SCREW, Phillips	
7 - 8	9200 1238	1	. OIL PUMP ASSY	
7 - 9	9200 1084	1	. O-RING	
7 - 10	9200 1085	1	. SCREW, Phillips	
7 - 11	9200 1241	1	. FITTING, Banjo	

NOTE: The oil injection pump is not installed on all F500K engines. However, the oil pump kit can be installed on any pre-mix F500K engine.

Please refer to the "M" Series Chassis Parts List for Oil Reservoir Tank and Delivery Line parts.

